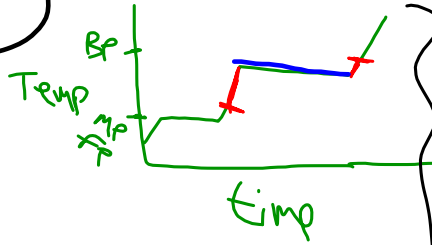


10g H₂O 30°C → 110°C

$c = 4.18 \text{ J/g}^\circ\text{C}$, $H_f = 336 \text{ J/g}$

$H_v = 2260 \text{ J/g}$

Find J

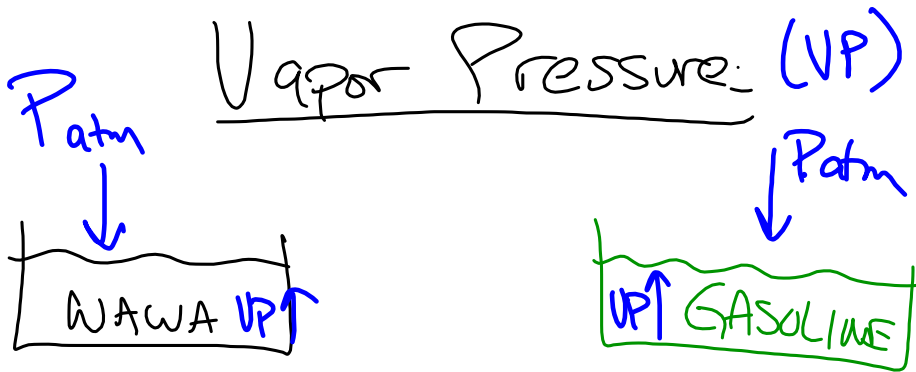


$$Q = mC\Delta T + Q = mH_v$$

$$= (10)(4.18)(80) + 10(2260)$$

$$2594 \text{ J}$$

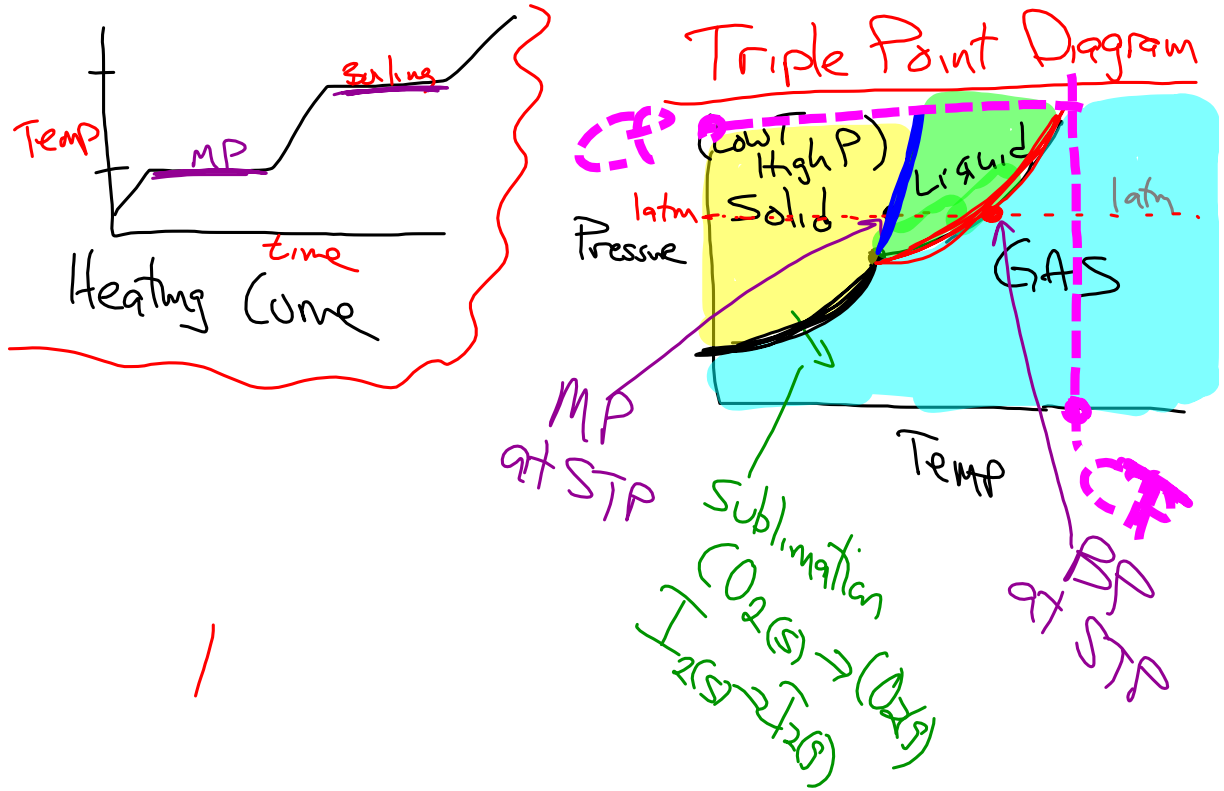
Dec 23-7:46 AM



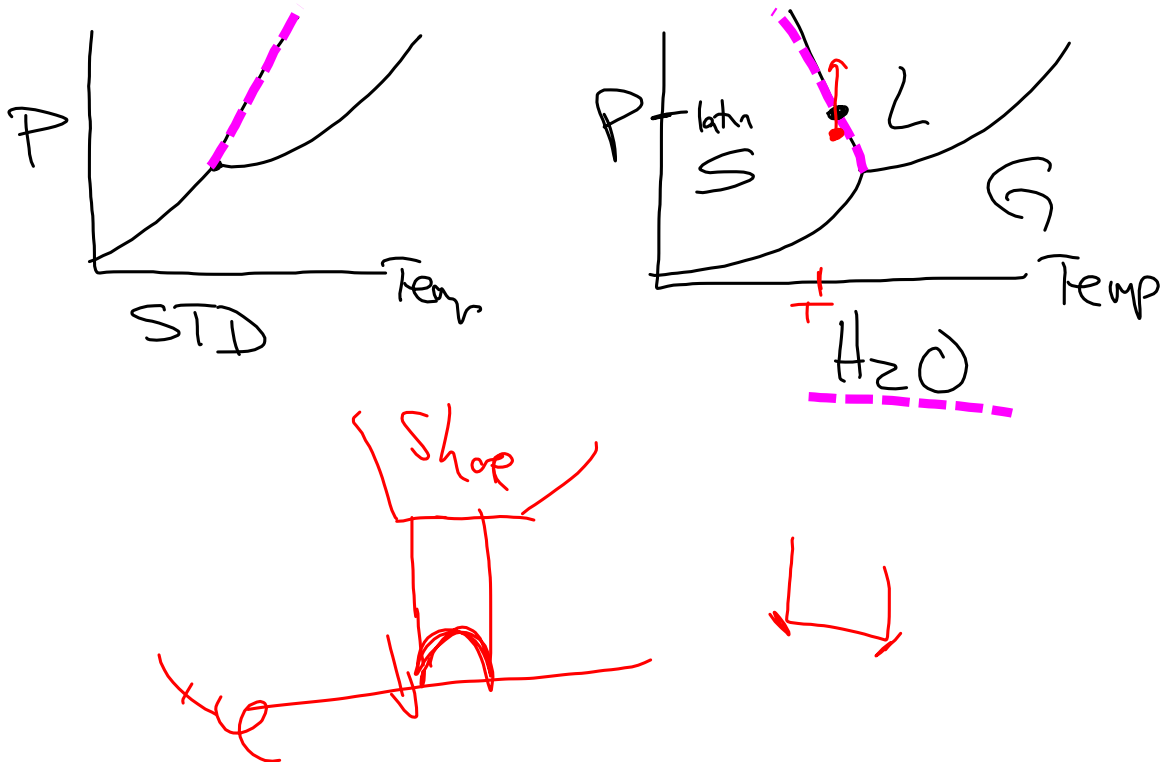
Boiling = $VP \geq P_{atm}$

evap. quicker
Greater V.P.

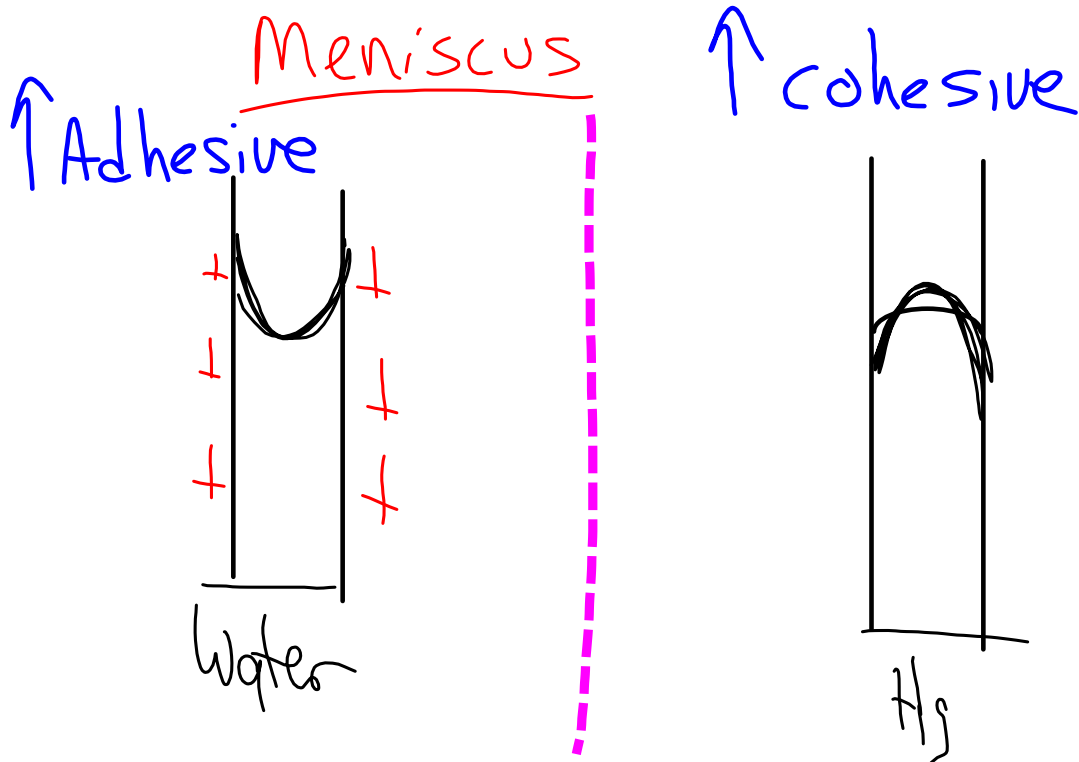
Dec 23-8:04 AM



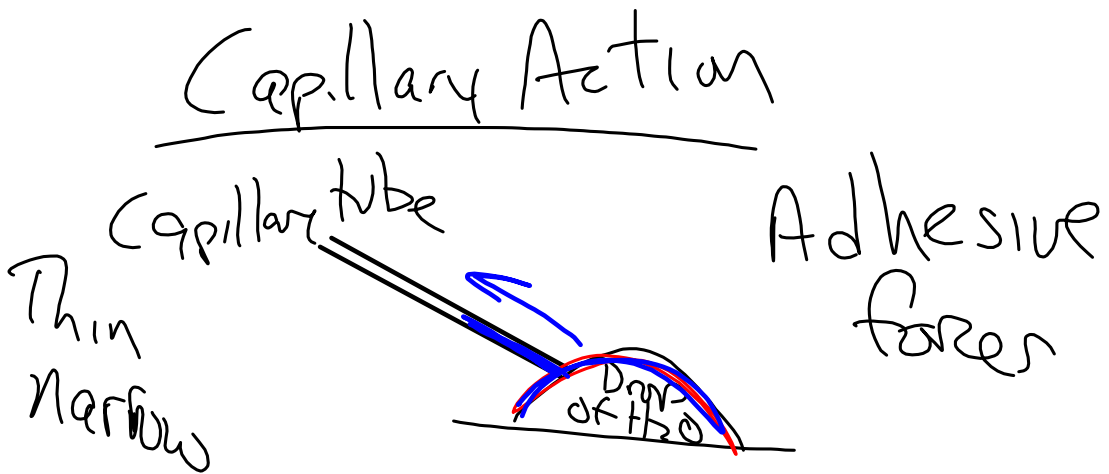
Dec 23-8:14 AM



Dec 23-8:46 AM



Dec 23-8:54 AM



Dec 23-8:59 AM

PS 11

Lowest MP → Weaker IMF

Dec 23-9:04 AM

Ar
LDF
Weakest

③

HI
LDF
Dipole-Dipole

①

Greatest IMF
↑
SP

HQ
LDF
Dipole-Dipole

②

Dec 23-9:08 AM

N O F

A hand-drawn box containing the handwritten text "P446". The box is roughly rectangular with rounded corners and a slightly wavy bottom edge. The text "P446" is written in a cursive, handwritten style.

Dec 23-9:12 AM